

Layer-by-Layer Growth of Complex-Shaped Three-Dimensional Nanostructures with Focused Electron Beams

Luka Skoric,^{*,†} Dédalo Sanz-Hernández,[†] Fanfan Meng,[†] Claire Donnelly,[†] Sara Merino-Aceituno,[‡] and Amalio Fernández-Pacheco^{*,§,†}

[†]Cavendish Laboratory, University of Cambridge, JJ Thomson Avenue, CB3 0HE, Cambridge, United Kingdom

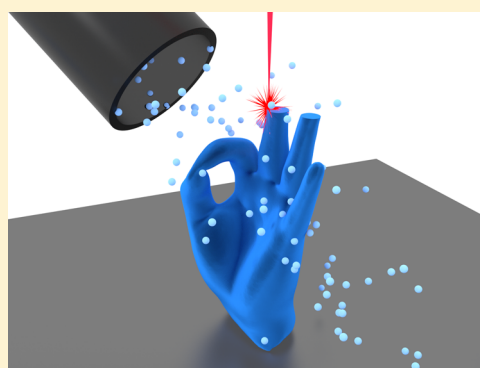
[‡]Faculty of Mathematics, University of Vienna, Oskar-Morgenstern-Platz 1, 1090, Vienna, Austria

[§]SUPA, School of Physics and Astronomy, University of Glasgow, Kelvin Building, G12 8QQ, Glasgow, Scotland, United Kingdom

S Supporting Information

ABSTRACT: The fabrication of three-dimensional (3D) nanostructures is of great interest to many areas of nanotechnology currently challenged by fundamental limitations of conventional lithography. One of the most promising direct-write methods for 3D nanofabrication is focused electron beam-induced deposition (FEBID), owing to its high spatial resolution and versatility. Here we extend FEBID to the growth of complex-shaped 3D nanostructures by combining the layer-by-layer approach of conventional macroscopic 3D printers and the proximity effect correction of electron beam lithography. This framework is based on the continuum FEBID model and is capable of adjusting for a wide range of effects present during deposition, including beam-induced heating, defocusing, and gas flux anisotropies. We demonstrate the capabilities of our platform by fabricating free-standing nanowires, surfaces with varying curvatures and topologies, and general 3D objects, directly from standard stereolithography (STL) files and using different precursors. Real 3D nanoprinting as demonstrated here opens up exciting avenues for the study and exploitation of 3D nanoscale phenomena.

KEYWORDS: 3D nanoprinting, FEBID, additive manufacturing, nanofabrication, layer-by-layer



The realization of three-dimensional (3D) nanoscale systems is expected to play a key role for the future progress in many areas of nanotechnology such as biology,¹ nanomagnetism,² metamaterials,³ and micro-electromechanical systems (MEMS).⁴ However, conventional lithography methods that excel in planar patterning are not well suited for complex 3D nanofabrication. The development of advanced direct-write micro- and nanoscale fabrication techniques is a possible solution to this problem currently under intense investigation. These include two-photon lithography,^{5,6} direct ink writing,⁷ laser-assisted methods,^{8,9} local dispensing of ions in liquid,^{10,11} and focused electron and ion beam-induced deposition (FEBID and FIBID).^{12,13}

The rapid prototyping of functional geometries with submicrometer features is particularly important for applications in areas such as magnetism, superconductivity, and metamaterials which are ruled by characteristic length scales typically in the ten to hundred nanometer range.^{2,14–17} When it comes to fabricating these geometries, FEBID has demonstrated a number of advantages,^{18,19} including resolution of a few tens of nanometers, and vertical growth rates of hundreds of nanometers per second.²⁰ A large number of available precursors allows for the deposition of metallic, organic, semiconducting, magnetic, and superconducting

materials.^{21,22} Although traditionally FEBID-fabricated materials contain a significant proportion of organic impurities, deposition of highly pure materials has been demonstrated via different strategies, including synthesis of new precursors,^{23–25} optimization of growth conditions,^{26–28} introduction of reactive gases during growth,²⁹ and postdeposition purification.^{30–32}

These advances have already led to a number of important fundamental studies in plasmonics,^{14,33} photonic crystals,³⁴ and magnetic nanowires and lattices.^{35–39} Beyond nanoprototyping, a substantial increase in throughput for this technique could be accomplished by orders-of-magnitude increases in deposition rates through optimizations of gas injection systems (GIS)⁴⁰ and deposition at cryogenic temperatures,⁴¹ and even parallelizing via multiple beams in next-generation tools.⁴²

The application of FEBID for 3D nanofabrication has progressed significantly in recent years by evolving from a trial-and-error approach to systematic generation of electron beam instructions via CAD software solutions.^{43,44} These works

Received: August 29, 2019

Revised: December 4, 2019

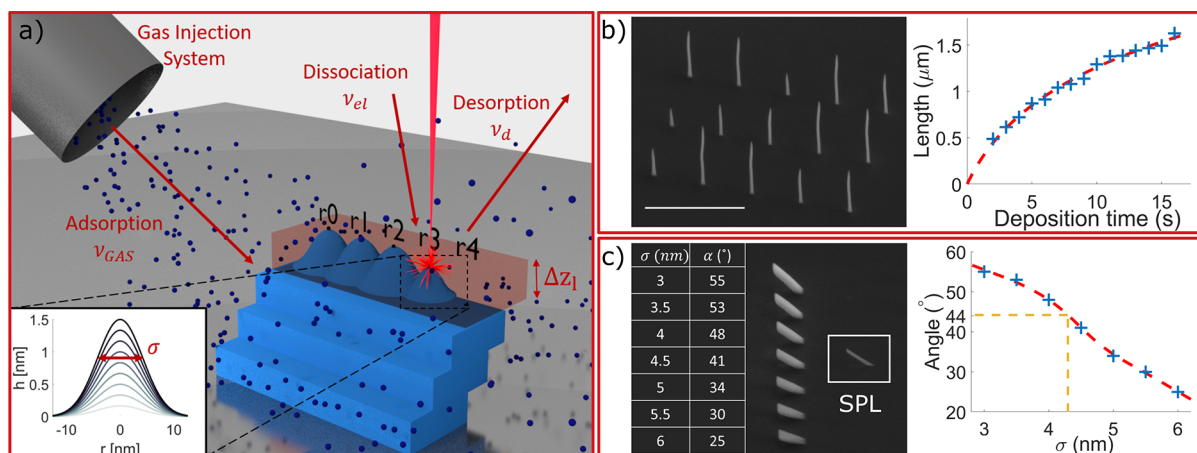


Figure 1. Schematic of FEBID 3D growth and calibration experiments. (a) Gas injection system creates a local gas coverage at the surface determined by the frequencies of adsorption (ν_{GAS}), desorption (ν_d), and dissociation (ν_{el}). The growth in the out-of-plane direction is done in layers parallel to the focal plane of the electron beam. At each scanning point r_i a deposit is created. Nearby deposits interact to form a layer of height Δz_l . Inset shows the cross section of the height evolution for a Gaussian deposit. (b) Vertical calibration used to determine growth rate and the temperature scaling factor. Here we measure $GR_0 = 300 \text{ nm s}^{-1}$ and $k = 1.2 \text{ nm}^{-1}$. For fitting details, see [Supporting Information S4.3](#). (c) The effective standard deviation of the deposit σ is determined from short wide structures by varying σ in the model and creating several structures. The real value of σ is obtained by comparing these structures to a single pixel line (SPL, see inset). The plotted values are interpolated with a smoothing spline to acquire the real value of σ . Here we get $\sigma = 4.2 \text{ nm}$. Scale bars are $2 \mu\text{m}$.

make an important step toward controllable nanoscale 3D printing of networks of nanowires, correcting effectively for various phenomena present in FEBID when growing pseudo-1D elements using different approaches.¹² To exploit the full potential of FEBID as a 3D fabrication tool, however, the nanoprinting protocol needs to be redefined in order to generalize it to more complex geometries.

In this Letter, we go beyond previous heuristic models by developing a general layer-by-layer framework for the additive manufacturing of 3D nanoscale objects by focused electron beams. Our approach, based on the FEBID continuum model, offers a new level of control over the fabrication of three-dimensional nanosystems. We present an algorithm capable of creating beam scanning patterns adjusted for proximity effects directly from conventional 3D printing stereolithography (STL) file formats. We further show that the model can take account of a range of phenomena, including beam-induced heating, defocusing, and gas flux anisotropy. We demonstrate the effectiveness of the model by fabricating geometrically complex 3D structures with high fidelity and with different precursors. This work represents a significant step forward in the capabilities for 3D fabrication at the nanoscale, as well as in the simplification of the nanostructure-design process.

Theoretical Description of Growth Model. FEBID deposition is inherently a stochastic process where each electron beam dwell induces the deposition of a small number of precursor molecules. However, when averaged over the characteristic deposition times (usually in the order of a few seconds to tens of minutes), a good approximation can be achieved by describing the height h of the evolving deposit as a continuous function of dwell time t and radial distance r from the beam center $h(t, r)$.⁴⁵ Overlapping a large number of such deposits produces out of plane growth.

We develop a framework where, similar to conventional 3D printing, structures are grown via the deposition of thin slices/layers. In each layer, a series of deposits i is made at beam scanning positions r_i with dwell times t_i , creating deposits $h_i(t_i, \|r - r_i\|)$ (see [Figure 1a](#)).

Provided that the lateral separation between layers is low and that the individual deposits are small and closely spaced, the total height increment at any r_i is the sum over all neighboring deposits. For consistent growth, this needs to be equal to the height of a layer l , Δz_l , resulting in a set of equations for each layer depending on the inter-point distances and dwell times

$$\sum_{j \in N_i} h_j(t_j, \|r_j - r_i\|) = \Delta z_l \quad (1)$$

where N_i is the set of all deposits of a layer l in the proximity of r_i (referred to as neighboring points), and t_j is the dwell time associated with each point of the layer.

In general, these equations form a nonlinear optimization problem which is computationally expensive to solve. However, under the assumption that the deposit evolution can be well approximated by a separable function of time and space $h(t, r) = s(r)f(t)$, we can reduce [eq 1](#) to a matrix equation that is numerically efficiently solvable

$$\Delta z_l = s_{ij} f(t_i) \quad (2)$$

where $s_{ij} = s(\|r_j - r_i\|)$ is a symmetric matrix, here referred to as the intralayer proximity matrix. The dwell time values needed for consistent growth can then be calculated numerically by solving this matrix equation and inverting f . This framework allows us to adjust for interdeposit proximity effects within a layer of a 3D object, similarly to “self-consistent” dose correction algorithms employed in electron beam lithography.^{46,47} Here we treat each slice of a 3D object separately, reducing the hard problem of a general 3D growth to a set of 2D consistency equations, significantly reducing the calculation complexity.

To use the above framework for the realistic modeling of a FEBID deposition, an accurate expression for $h(t, r)$ is needed. In the following, we determine this function for the Langmuir FEBID model under equilibrium conditions.⁴⁵ Using the compact notation based on the characteristic FEBID frequencies that we previously developed,⁴⁸ the dynamics of

fractional surface molecule coverage under no diffusion θ can be described as a competition between the characteristic frequencies of gas adsorption (ν_{GAS}), thermal desorption (ν_{d}), and electron-induced precursor dissociation (ν_{el})

$$\frac{\partial \theta}{\partial t} = \nu_{\text{GAS}}(1 - \theta) - \nu_{\text{d}}\theta - \nu_{\text{el}}\theta \quad (3)$$

These frequencies are functions of experimental parameters such as the electron current, gas flow and molecule desorption energy (see [Supporting Information S1](#)). Their relative values determine in which FEBID regime (electron-limited, mass-transport-limited, desorption-dominated) an experiment takes place.⁴⁸

The corresponding growth rate (GR) is proportional to the amount of gas present and the electron dissociation frequency

$$\text{GR} = \frac{\partial h(t, r)}{\partial t} \propto \theta \nu_{\text{el}} \quad (4)$$

[Equations 3 and 4](#) can be solved analytically, describing the depletion of gas coverage under electron beam dissociation, and subsequent growth of the induced deposit (see [Supporting Information S1](#)).⁴⁵

To specify the spatial dependence of deposits, the profile of the effective flux of electrons inducing decomposition as a function of the radial distance from the electron beam $\nu_{\text{el}} = \nu_{\text{el}}(r)$ is required. For focused beams, this can be approximated by a Gaussian function²¹

$$\nu_{\text{el}} = \nu_{\text{el}}^0 \exp\left(\frac{-r^2}{2\sigma^2}\right) \quad (5)$$

where σ is the effective standard deviation, and ν_{el}^0 is the dissociation frequency in the center of the beam.

In general, the surface coverage will evolve during the beam dwell time, converging to an equilibrium distribution on the gas dynamics time scale (see [Supporting Information S1.1](#))

$$\tau_{\text{dyn}} = \frac{1}{\nu_{\text{GAS}} + \nu_{\text{d}}} \quad (6)$$

However, when growing either under electron limited conditions where the precursor depletion is small ($\nu_{\text{el}} \ll \nu_{\text{GAS}} + \nu_{\text{d}}$), or in the case when the characteristic dwell time (usually on the order of 1 ms) is much longer than the time-scale for convergence to equilibrium ($t_{\text{dwell}} \gg \tau_{\text{dyn}}$), we can assume that the system is at equilibrium at all times during the growth. This simplifies the expression for $h(t, r)$ to

$$h \propto \frac{\nu_{\text{GAS}}\nu_{\text{el}}(r)}{\nu_{\text{GAS}} + \nu_{\text{d}} + \nu_{\text{el}}(r)} t \quad (7)$$

In this form, h is written as a separable function with no further approximations. We follow this approach in our experiments as discussed below.

To allow for an analytical solution, in the above analysis we did not consider the effect of diffusion, which may become important in FEBID under mass-transport limited conditions.⁴⁵ However, in the context of Langmuir FEBID, the addition of diffusion would only alter the relevant time scales by speeding up the gas dynamics, as shown in [Supporting Information S2](#). The separable form of deposit evolution could also be recovered in this case, albeit with a more complex form for the spatial part $s(r)$.

Experimental Determination of Growth Parameters.

For the effective implementation of the model described above, a good approximation for $s(r)$ needs to be determined. In the following, we focus on the standard Pt-based precursor. A generalization to other precursors is discussed later.

To apply our model experimentally, key deposition parameters need to be determined for the given experimental conditions. Although in recent years a significant effort has been made toward determining these both through experiment^{20,21,49–52} and simulations,^{53–57} the size of the parameter space still prevents confident ab initio growth predictions. Here we demonstrate a set of experiments ([Figure 1b,c](#)) designed to find the minimal set of parameters which represent our growth conditions, enabling a simple calibration and preventing overfitting.

We measure the growth parameters by building a set of standardized structures, isolating the dependence of the growth rate to particular factors. First, to determine growth rate at the center of the beam, a set of spot depositions is built in parallel with different total deposition times ([Figure 1b](#)). The resulting lengths of the vertical nanowires are measured and plotted against the deposition times.

Under the experimental conditions used in this paper (see [Experimental Section](#)), we have observed no more than 7% variation in the average growth rate when varying the dwell and refresh times used in 3D FEBID deposition (see [Supporting Information S3](#)). Therefore, we can safely assume that [eq 7](#) provides a good approximation of the deposition.

The sublinear dependence of nanowire length on the deposition times can thus be understood via the enhancement of thermal desorption due to beam-induced heating ν_{d} .⁵⁵ The absolute changes in local temperature during deposition are not expected to be large compared to room temperature, being usually in the order of 10 K.^{55,58} We can thus expand the desorption temperature dependence to first order

$$\nu_{\text{d}} = \nu_0 \exp\left(-\frac{E_{\text{d}}}{k_{\text{B}}(T_0 + T_{\text{el}})}\right) \approx \nu_{\text{d}}^0 e^{\beta T_{\text{el}}} \quad (8)$$

where ν_0 is the desorption attempt frequency, T_0 is the base deposition temperature, $T_{\text{el}} \ll T_0$ is the change in temperature due to electron beam heating, ν_{d}^0 is the desorption at T_0 , and $\beta = E_{\text{d}}/(k_{\text{B}}T_0^2)$.

The significant effect of local temperature, together with low equilibrium precursor coverage in Pt FEBID,⁵⁹ implies a strong dependence of the growth rates on desorption. Therefore, even though in general we allow for the full form of the equilibrium growth rate ([eq 7](#)) in our model, we have found that the desorption dominated regime ($\nu_{\text{d}} \gg \nu_{\text{GAS}} + \nu_{\text{el}}$)⁴⁸ results in the best fit to our experimental conditions.

Under the assumption that the incident beam heating rate is the same at all dwell points and that the characteristic thermal transport time scale is expected to be short relative to the dwell times,⁵⁵ a quasi steady-state temperature can be assumed for every dwell. Hence, the temperature variation during deposition is fully captured by a geometrical factor R_{T} , giving account for the resistance of the 3D structure to heat transport at the point of scanning ($T_{\text{el}} \propto R_{\text{T}}$).⁵⁵

Considering the effect of beam heating in the desorption-dominated regime, [eq 7](#) gives a Gaussian deposit (see inset in [Figure 1a](#))

$$h(t, r) = GR_0 e^{-kR_T} \exp\left(\frac{-r^2}{2\sigma^2}\right) t \quad (9)$$

where the growth rate in the center of the beam at a base deposition temperature GR_0 , thermal resistance scaling factor k , and the standard deviation of the deposit σ are parameters that need to be determined. The exponential temperature dependence for desorption (eq 8) is expressed here through the geometry-dependent factor e^{-kR_T} . For details about the implementation of the resistance model and the derivation of eq 9 see Supporting Information S4.

This experiment, involving vertical deposits, allows us to remove the potential influence of the geometry of the structure and proximity effects on the resulting growth. We extract the expected dependence of lengths $L(t)$ on deposition times t based on eq 9, with w_0 as their width, and growth rate GR_0 and resistance scaling factor k as fitting parameters (see Supporting Information S4.3 for the full derivation)

$$L(t) = \frac{w_0}{k} \log\left(\frac{kGR_0 t}{w_0} + 1\right) \quad (10)$$

A second experiment (Figure 1c) is designed to obtain a value for σ . For this, a set of nominally 150 nm wide straight nanowires tilted at 45° are built using the algorithm, while varying the value of σ in the model with the goal of matching the angle of a single pixel thin nanowire built with the same conditions. For the Pt precursor, we find $GR_0 \approx 100\text{--}300 \text{ nms}^{-1}$, and $\sigma \approx 4\text{--}5 \text{ nm}$, depending on the SEM system and the conditions inside the microscope chamber, such as temperature, base pressure, and precursor flux.

This two-step calibration procedure allows us to uniquely determine all growth parameters required for implementing an algorithm to pattern 3D complex structures. This relaxes the demanding needs faced when using simulations to describe FEBID 3D growth processes, where a significant number of parameters need to be determined.⁵⁵ We further tested the validity of the calibration protocol by growing two sets of additional test structures: nanowires with constant out-of-plane angle and variable controllable width (Figure 2a), and nominally straight nanowires, where the k value obtained by the fit in Figure 1b leads to the growth of a straight structure (see “Optimal correction” in Figure 2b).

Strong heating effects are expected to play a dominant role in some 3D FEBID growth processes,⁵⁵ which explains why these experiments are well understood in the framework of the desorption-dominated regime. However, our method is also applicable in other regimes. It can be for instance readily applied to electron-limited conditions, where no important thermal effects would be present, and where the parameters GR_0 and σ would be sufficient to parametrize a 3D growth process. It would also apply to the mass-transport-limited and diffusion-enhanced regimes, as long as a steady-state is reached ($t_{\text{dwell}} \gg \tau_{\text{dyn}}$). This would however require using a different spatial function $s(r)$.⁴⁵ The method could in principle be applied to nonsteady state conditions as well, provided that the deposit evolution can be well approximated by a separable function (see eq 2). This more elaborate mathematical description would also demand a more complex calibration procedure, both of which are beyond the scope of this work.

Apart from temperature, we studied other potentially relevant effects such as electron beam defocusing and gas flux anisotropy. These have been found to have a relatively

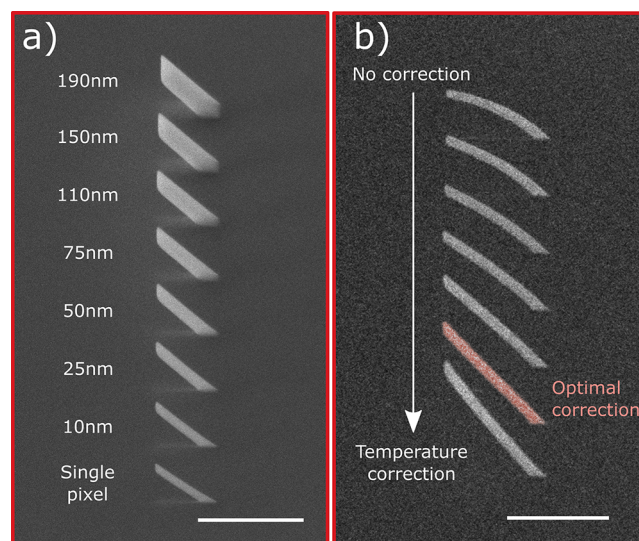


Figure 2. (a) A series of nanowires and their nominal widths, demonstrating that the algorithm accounts well for proximity effects. (b) Nanowires built with increasing temperature correction factors k , showing how straight growing nanowires can be recovered with optimal correction acquired from calibration colored in red. Both images are side-views taken at 45° tilt. Scale bars are 1 μm.

small effect for our experimental conditions but can be important for very fine growth in certain structures and deposition regimes. If required, further corrections of this type can be easily implemented in our model at the expense of introducing additional parameters that require independent calibration (see Supporting Information S5).

Three-Dimensional Printing Algorithm. We have implemented the layer-by-layer growth model explained above in a three-step algorithm designed to generate beam scanning patterns for FEBID deposition of 3D arbitrary geometries. The algorithm creates deposition sequences directly from STL files that can be designed in any standard 3D CAD software, the same approach followed by standard 3D printers. This approach, in combination with the model described above, is a significant improvement with respect to recent FEBID works,^{43,44} where specialized software is required, and where 3D growth is limited to nanowire-based structures with no proximity effects taken into account. This new strategy simplifies the design and enables the fabrication of complex 3D nano-objects. In this section, we give an outline of the algorithm and demonstrate its effectiveness and flexibility.

The workflow of the algorithm is described using the example of a free-standing concave surface (Figure 3a–c) with an SEM image of the fabricated nanostructure given in Figure 3d. First, a geometry is defined with an STL file which is sliced using constant- z planes, defining the layers of the structure (Figure 3a). In all experiments performed here, a maximum layer height of $\Delta z_1 \leq 6 \text{ nm}$ is set, to guarantee that the approximation of thin layers remains valid. Additionally, an adaptive slicing procedure has been implemented, adjusting the slice thickness based on the local angle of a structure. In this way, low hanging features are more finely defined, and a low lateral displacement between layers is maintained. From each slice, a dense mesh of dwell points is created with points separated by a lateral “pitch” distance. We set both the displacement between layers, and the pitch to be 3 nm. This

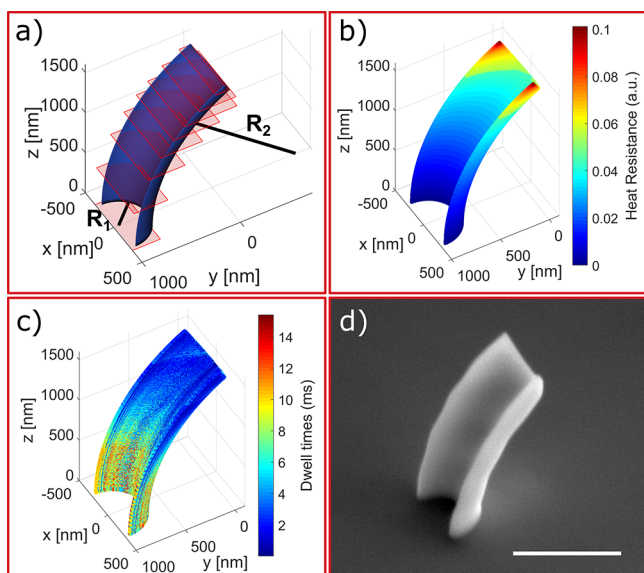


Figure 3. Workflow of the algorithm to create 3D complex objects by FEBID. (a) Design of a curved concave plane with two curvature radii ($R_1 = 300$ nm, $R_2 = 1500$ nm). The structure is sliced in layers and a dense mesh of regularly spaced points is generated for each layer. For clarity, every 75th slice is displayed. (b) Geometry-dependent parameters of growth are found at each point. The computed resistance to heat diffusion R_T is shown here. (c) Dwell times are calculated and written to a stream file, taking into account proximity effects between points in the same layer. (d) SEM of the printed model imaged at 45° tilt. Scale bar is 1 μ m.

value has been determined from dedicated experiments (see [Supporting Information S7](#)), where single nanowires were found to be widely independent of point pitch, for pitch values below 4 nm, in agreement with literature.²⁰

In a second step, geometry-dependent factors affecting the growth are calculated and included as growth parameters for each dwell point. Specifically, the previously discussed resistance-based model for beam-induced heating is implemented, as displayed in [Figure 3b](#). Further corrections for second-order effects such as beam defocusing and gas flux anisotropy are also possible but only applied to objects where the added complexity is essential for successful deposition (see [Supporting Information S5](#)). We anticipate that this second step of the algorithm could be expanded further by including additional factors relevant in other conditions and geometries, such as diffusion⁵⁵ and the dependence of secondary electron emission with local geometry.⁵² These, together with the measured calibration parameters, would redefine the model for deposition, $s(r)$, at every dwell point.

Third, we implement the per-layer dwell time solver. Interpoint distances are computed and, together with the growth model, result in the intralayer proximity matrix s_{ij} . The optimization problem for finding the appropriate dwell times at each point (as per [eq 2](#)) is then solved using a non-negative linear-least-squares solver. The colormap of [Figure 3c](#) represents the resulting dwell times at each position.

Finally, the beam scanning pattern is generated out of the computed dwells. In each layer, the beam is set to make multiple passes, reversing its direction from layer to layer in a “serpentine” pattern,³⁶ to avoid exceeding a set maximum dwell time (5 ms) and improving the smoothness of the

deposition. The generated pattern is deposited, resulting in the SEM image shown in [Figure 3d](#).

In what follows, we demonstrate the capabilities of the algorithm by patterning a range of geometries using two different (Pt- and Co-based) precursors. We first show that the fabrication of networks of straight nanowires can be reproduced, similar to the existing FEBID algorithms,^{43,44} by building a sequence of nanocubes of different sizes with half-pitch down to 50 nm (see [Figure 4a,b](#) and [Supporting](#)

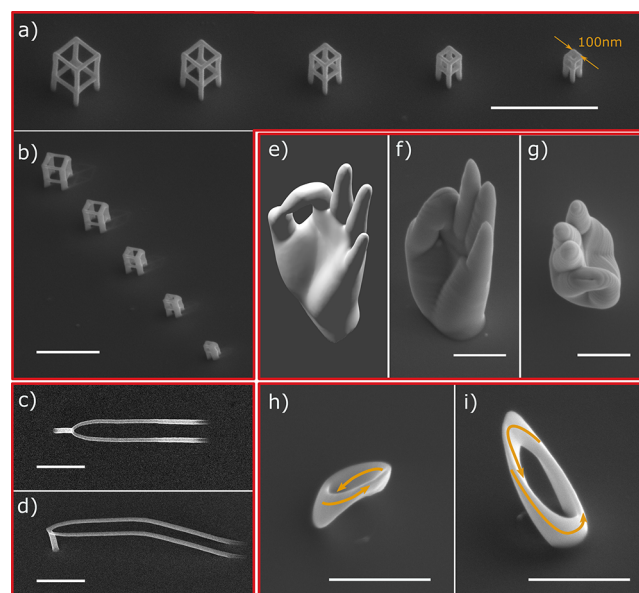


Figure 4. SEM images under two orientations of a range of 3D geometries built using the three-stage 3D printing algorithm. (a,b) A series of cubes with side-lengths (left to right): 300, 250, 200, 150, 100 nm at 45° tilt. Image (b) was taken by rotating the stage about the beam axis by 50° relative to (a); (c,d) Smooth nanowires circuit imaged under 30° tilt. Vertical leg at the tip of the circuit is for added mechanical stability. (e–g) STL model, and side and top views of a nanoscale replica of a human hand. Panels a–g were built using a Pt-based precursor. (h,i) Cobalt Möbius strip with arrows to help visualize the topology of the strip. The STL models of structures with further details on the viewing angles ([Supporting Information S9](#)), and a [Video](#) of a Möbius strip compiled from multiple images are provided in the [Supporting Information](#). Scale bars are 1 μ m.

[Information S8](#) for further details). Second, expanding recent achievements in nanowire device fabrication,^{35,36} in [Figure 4c,d](#) we create a free-standing looped nanowire circuit formed by segments at different angles. The high quality and smoothness of the connections achieved here show the potential of our method to nanoprototype advanced 3D nanoelectronic devices.³⁵

Finally, the main advantage of our approach is the capability to fabricate arbitrary three-dimensional architectures out of files created by any standard CAD software. This allows us to go beyond previous approaches,^{43,44} based solely on the growth of nanowire-based 3D objects only, and which require the use of specialized FEBID CAD software. As an example, we have fabricated a nanoscale human hand replica ([Figure 4e–g](#)) and a Möbius strip ([Figure 4h,i](#)). These example structures present a wide range of features at different scales which are accurately replicated in experiments. In particular, [Figure 4h,i](#) shows the potential of this approach where, as far as we are aware, the smallest realization of a magnetic Möbius strip has

been fabricated. See the [Video in Supporting Information](#) for a full characterization of this structure at multiple angles and comparison with the corresponding model file.

We note though, that the thickening of some features is observed for the built structure with respect to the model, for example, the hand ([Figure 4f](#)) and the associated STL file ([Figure 4e](#)). This edge thickening effect is expected when creating a volumetric object via FEBID due to the penetration of the primary electron beam through the structure, and subsequent generation of backscattered electrons and type II secondary electrons. In order to correct for this additional precursor dissociation, a “shape-dimension adjustment technique”,⁴⁷ as the one employed in electron beam lithography, could be implemented.

Another point to note is that the model has been primarily developed using the standard Pt precursor due to its fast growth rate (of the order of 100 nm s⁻¹), low dependence on refresh times, and a well-known mechanism for decomposition under focused electron beams.⁶⁰ [Figure 4h,i](#) demonstrate the algorithm’s robustness when applied to other precursors. The Co-based precursor used to build this structure has a significantly more complex chemical behavior, including autocatalytic effects.^{61,62} We attribute the transferability of our algorithm to complex gases to the ability of the basic Gaussian deposit model with a constant vertical growth rate with no temperature correction

$$h(t, r) = GR_0 \exp\left(\frac{-r^2}{2\sigma^2}\right)t \quad (11)$$

to capture the effective average of deposition and give satisfactory first-order results for most regimes. This is especially true for wide structures (as opposed to single-pixel nanowires) because scanning along their width introduces a natural refresh rate. Moreover, beam heating effects are greatly reduced due to the higher heat conductivity provided by a larger volume, leading to more consistent growth rates (see [Supporting Information S4.2](#)).

In conclusion, we present a framework that makes possible high-fidelity layer-by-layer growth of complex-shaped 3D nanostructures using focused electron beams. On the basis of a layer-by-layer growth implemented in combination with the FEBID continuum model and proximity effect corrections, we can effectively account for a variety of effects, including beam-induced heating, defocusing, and gas anisotropy. These effects have been studied for the Pt precursor, where we demonstrate how a large number of fundamental parameters can be reduced to only three, which are capable of effectively modeling the 3D deposition process.

The framework has been implemented computationally to generate beam scanning patterns from STL files created by any standard 3D CAD software. Using this approach, a wide range of nanogeometries which were until now inaccessible has been fabricated. These include surfaces with curvature along arbitrary directions, a Möbius strip and a replica of a human hand. We have successfully tested our platform in three SEM systems and using two precursors with different physical and chemical properties, thus demonstrating the robustness and applicability of the technique.

This work paves the way for the advanced nanomanufacturing of 3D objects in a wide range of nanotechnology areas, making a fundamental step toward the study of advanced effects and their future exploitation.

Experimental Section. Three different dual-beam microscope systems were used for FEBID experiments: Helios 600 at the Wolfson Electron Microscopy Suite of University of Cambridge, FEI Nova 200, and Helios 660 NanoLab at the Kelvin Nanocharacterisation Centre of University of Glasgow. Helios 600 and Nova 200 were used for deposition of MeCpPt(Me)₃, whereas Helios 660 was used with Co₂(CO)₈ precursor.

All depositions were performed on p-doped Si substrates under 21 pA, 30 kV electron beams. All structures were patterned by scanning the beam within the focal plane. No change in beam focus was introduced, making use of the long depth of field of scanning electron microscopes. [Supporting Information S10](#) includes a detailed list of experimental growth conditions and model parameters for all structures included in this work. The algorithm for computing dwell points and corresponding dwell times was implemented in MATLAB using the built-in Optimization Toolbox. Computation times for all structures were in the order of ~10 s on most modern desktop computers with the exception of the hand ([Figure 4e–g](#)) which took several minutes. The algorithm was in some cases supplemented with stage tilting to build features at various angles. In particular, this was exploited for the structures on [Figure 4a,b\(c,d\)](#) by building at 45°(30°) tilt in order to realize nanowires parallel to the substrate. The fabrication times ranged from 2 s for the shortest pillar in [Figure 1b](#), 1 min for the largest cube ([Figure 4a,b](#)), and up to 65 and 75 min for the Möbius and hand respectively ([Figure 4e–g](#)). For more information about the access to the software used in this paper, please contact the corresponding authors.

■ ASSOCIATED CONTENT

● Supporting Information

The Supporting Information is available free of charge at <https://pubs.acs.org/doi/10.1021/acs.nanolett.9b03565>.

Video showing Möbius strip from different angles compared to the corresponding 3D model ([MP4](#))

Experimental and technical details ([PDF](#))

■ AUTHOR INFORMATION

Corresponding Authors

*E-mail: ls604@cam.ac.uk.

*E-mail: amalia.fernandez-pacheco@glasgow.ac.uk.

ORCID

Dédalo Sanz-Hernández: 0000-0002-5552-8836

Amalia Fernández-Pacheco: 0000-0002-3862-8472

Notes

The authors declare no competing financial interest.

■ ACKNOWLEDGMENTS

This work was supported by the EPSRC Cambridge NanoDTC EP/L015978/1, an EPSRC Early Career Fellowship EP/M008517/1, and the Winton Program for the Physics of Sustainability. L.S. acknowledges support from St. Johns College of the University of Cambridge. C.D. was supported by the Leverhulme Trust (ECF-2018-016), the Isaac Newton Trust (18-08), and the L’Oréal-UNESCO U.K. and Ireland Fellowship For Women In Science. S. M.-A. was supported by the Vienna Research Groups Grant VRG17-014 by the Vienna Science and Technology Fund. D.S.-H. acknowledges a Girtton College Pfeiffer Scholarship. F.M. was supported by China

Scholarship Council. The authors thank the staff of the Wolfson Electron Microscopy Suite of University of Cambridge and the Kelvin Nanocharacterisation Centre of University of Glasgow for technical support. We thank Jason D. Fowlkes, A. Hierro-Rodriguez, and A. Welbourne for helpful discussions.

REFERENCES

- (1) Qian, T.; Wang, Y. *Med. Biol. Eng. Comput.* **2010**, *48*, 1023–1032.
- (2) Fernández-Pacheco, A.; Streubel, R.; Fruchart, O.; Hertel, R.; Fischer, P.; Cowburn, R. P. *Nat. Commun.* **2017**, *8*, 15756.
- (3) Kadic, M.; Milton, G. W.; van Hecke, M.; Wegener, M. *Nat. Rev. Phys.* **2019**, *1*, 198–210.
- (4) Vavassori, P.; Pancaldi, M.; Perez-Roldan, M. J.; Chuvilin, A.; Berger, A. *Small* **2016**, *12*, 1013–1023.
- (5) Vyatskikh, A.; Delalande, S.; Kudo, A.; Zhang, X.; Portela, C. M.; Greer, J. R. *Nat. Commun.* **2018**, *9*, 1–8.
- (6) Seniutinas, G.; Weber, A.; Padeste, C.; Sakellari, I.; Farsari, M.; David, C. *Microelectron. Eng.* **2018**, *191*, 25–31.
- (7) Lewis, J. A. *Adv. Funct. Mater.* **2006**, *16*, 2193–2204.
- (8) Lewis, B. B.; Winkler, R.; Sang, X.; Pudasaini, P. R.; Stanford, M. G.; Plank, H.; Unocic, R. R.; Fowlkes, J. D.; Rack, P. D. *Beilstein J. Nanotechnol.* **2017**, *8*, 801–812.
- (9) Takai, T.; Nakao, H.; Iwata, F. *Opt. Express* **2014**, *22*, 28109–28117.
- (10) Hirt, L.; Ihle, S.; Pan, Z.; Dorwling-Carter, L.; Reiser, A.; Wheeler, J. M.; Spolenak, R.; Vörös, J.; Zambelli, T. *Adv. Mater.* **2016**, *28*, 2311–2315.
- (11) Momotenko, D.; Page, A.; Adobes-Vidal, M.; Unwin, P. R. *ACS Nano* **2016**, *10*, 8871–8878.
- (12) Winkler, R.; Fowlkes, J. D.; Rack, P. D.; Plank, H. *J. Appl. Phys.* **2019**, *125*, 210901.
- (13) Matsui, S. In *Encyclopedia of Nanotechnology*; Bhushan, B., Ed.; Springer Netherlands: Dordrecht, 2012; pp 866–876.
- (14) Esposito, M.; Tasco, V.; Cuscunà, M.; Todisco, F.; Benedetti, A.; Tarantini, I.; Giorgi, M. D.; Sanvitto, D.; Passaseo, A. *ACS Photonics* **2015**, *2*, 105–114.
- (15) Bezryadin, A.; Lau, C. N.; Tinkham, M. *Nature* **2000**, *404*, 971.
- (16) Belkin, A.; Belkin, M.; Vakaryuk, V.; Khlebnikov, S.; Bezryadin, A. *Phys. Rev. X* **2015**, *5*, 021023.
- (17) Zhu, D.; Zhao, Q.-Y.; Choi, H.; Lu, T.-J.; Dane, A. E.; Englund, D.; Berggren, K. K. *Nat. Nanotechnol.* **2018**, *13*, 596–601.
- (18) Hirt, L.; Reiser, A.; Spolenak, R.; Zambelli, T. *Adv. Mater.* **2017**, *29*, 1604211.
- (19) Jesse, S.; Borisevich, A. Y.; Fowlkes, J. D.; Lupini, A. R.; Rack, P. D.; Unocic, R. R.; Sumpter, B. G.; Kalinin, S. V.; Belianinov, A.; Ovchinnikova, O. S. *ACS Nano* **2016**, *10*, 5600–5618.
- (20) Winkler, R.; Lewis, B.; Fowlkes, J.; Rack, P.; Plank, H. *ACS Appl. Nano Mater.* **2018**, *1*, 1014–1027.
- (21) Utke, I.; Hoffmann, P.; Melngailis, J. J. *Vac. Sci. Technol. B: Microelectron. Nanometer Struct. Process. Meas. Phenom.* **2008**, *26*, 1197–1276.
- (22) Huth, M.; Poratti, F.; Dobrovolskiy, O. V. *Microelectron. Eng.* **2018**, *185*–186, 9–28.
- (23) Poratti, F.; Pohlitz, M.; Müller, J.; Barth, S.; Biegger, F.; Gspan, C.; Plank, H.; Huth, M. *Nanotechnology* **2015**, *26*, 475701.
- (24) Makise, K.; Mitsuishi, K.; Shimojo, M.; Shinozaki, B. *Sci. Rep.* **2014**, *4*, 5740.
- (25) Winhold, M.; Weirich, P. M.; Schwalb, C. H.; Huth, M. *Appl. Phys. Lett.* **2014**, *105*, 162603.
- (26) Pablo-Navarro, J.; Sanz-Hernández, D.; Magén, C.; Fernández-Pacheco, A.; de Teresa, J. M. *J. Phys. D: Appl. Phys.* **2017**, *50*, 18LT01.
- (27) Bernau, L.; Gabureac, M.; Erni, R.; Utke, I. *Angew. Chem., Int. Ed.* **2010**, *49*, 8880–8884.
- (28) Ke, X.; Bittencourt, C.; Bals, S.; Van Tendeloo, G. *Beilstein J. Nanotechnol.* **2013**, *4*, 77–86.
- (29) Shawrav, M. M.; Taus, P.; Wanzenboeck, H. D.; Schinnerl, M.; Stöger-Pollach, M.; Schwarz, S.; Steiger-Thirsfeld, A.; Bertagnolli, E. *Sci. Rep.* **2016**, *6*, 34003.
- (30) Serrano-Ramón, L.; Fernández-Pacheco, A.; Córdoba, R.; Magén, C.; Rodríguez, L. A.; Petit, D.; Cowburn, R. P.; Ibarra, M. R.; Teresa, J. M. D. *Nanotechnology* **2013**, *24*, 345703.
- (31) Botman, A.; Mulders, J. J. L.; Weemaes, R.; Mentink, S. *Nanotechnology* **2006**, *17*, 3779–3785.
- (32) Botman, A.; Mulders, J. J. L.; Hagen, C. W. *Nanotechnology* **2009**, *20*, 372001.
- (33) Winkler, R.; Schmidt, F.-P.; Haselmann, U.; Fowlkes, J. D.; Lewis, B. B.; Kothleitner, G.; Rack, P. D.; Plank, H. *ACS Appl. Mater. Interfaces* **2017**, *9*, 8233–8240.
- (34) Koops, H. W. P.; Hoinkis, O. E.; Honsberg, M. E. W.; Schmidt, R.; Blum, R.; Böttger, G.; Kuligk, A.; Liguda, C.; Eich, M. *Microelectron. Eng.* **2001**, *57*–58, 995–1001.
- (35) Sanz-Hernández, D.; Hamans, R. F.; Liao, J.-W.; Welbourne, A.; Lavrijsen, R.; Fernández-Pacheco, A. *ACS Nano* **2017**, *11*, 11066–11073.
- (36) Sanz-Hernández, D.; Hamans, R. F.; Osterrieth, J.; Liao, J.-W.; Skoric, L.; Fowlkes, J. D.; Rack, P. D.; Lippert, A.; Lee, S. F.; Lavrijsen, R.; Fernández-Pacheco, A. *Nanomaterials* **2018**, *8*, 483.
- (37) Fernandez-Pacheco, A.; De Teresa, J. M.; Cordoba, R.; Ibarra, M. R. *J. Phys. D: Appl. Phys.* **2009**, *42*, 055005.
- (38) Wartelle, A.; Pablo-Navarro, J.; Staño, M.; Bochmann, S.; Pairis, S.; Rioult, M.; Thirion, C.; Belkhou, R.; de Teresa, J. M.; Magén, C.; Fruchart, O. *Nanotechnology* **2017**, *29*, 045704.
- (39) Keller, L.; Mamoori, M. K. I. A.; Pieper, J.; Gspan, C.; Stockem, I.; Schröder, C.; Barth, S.; Winkler, R.; Plank, H.; Pohlitz, M.; Müller, J.; Huth, M. *Sci. Rep.* **2018**, *8*, 6160.
- (40) Friedli, V.; Utke, I. *J. Phys. D: Appl. Phys.* **2009**, *42*, 125305.
- (41) Bresin, M.; Toth, M.; Dunn, K. A. *Nanotechnology* **2013**, *24*, 035301.
- (42) Riedesel, C.; Müller, I.; Kaufmann, N.; Adolf, A.; Kämmer, N.; Fritz, H.; Eberle, A. L.; Zeidler, D. Metrology, Inspection, and Process Control for Microlithography XXXIII. *Proc. SPIE* **2019**, 1095931.
- (43) Fowlkes, J. D.; Winkler, R.; Lewis, B. B.; Fernández-Pacheco, A.; Skoric, L.; Sanz-Hernández, D.; Stanford, M. G.; Mutunga, E.; Rack, P. D.; Plank, H. *ACS Appl. Nano Mater.* **2018**, *1*, 1028–1041.
- (44) Keller, L.; Huth, M. *Beilstein J. Nanotechnol.* **2018**, *9*, 2581–2598.
- (45) Toth, M.; Lobo, C.; Friedli, V.; Szkudlarek, A.; Utke, I. *Beilstein J. Nanotechnol.* **2015**, *6*, 1518–1540.
- (46) Owen, G. J. *Vac. Sci. Technol., B: Microelectron. Process. Phenom.* **1990**, *8*, 1889.
- (47) Parikh, M. J. *J. Appl. Phys.* **1979**, *50*, 4371–4377.
- (48) Sanz-Hernández, D.; Fernández-Pacheco, A. *Beilstein J. Nanotechnol.* **2017**, *8*, 2151–2161.
- (49) van Dorp, W. F.; Wnuk, J. D.; Gorham, J. M.; Fairbrother, D. H.; Madey, T. E.; Hagen, C. W. *J. Appl. Phys.* **2009**, *106*, 074903.
- (50) Wnuk, J. D.; Gorham, J. M.; Rosenberg, S. G.; van Dorp, W. F.; Madey, T. E.; Hagen, C. W.; Fairbrother, D. H. *J. Phys. Chem. C* **2009**, *113*, 2487–2496.
- (51) Yang, C.; Winkler, R.; Dukic, M.; Zhao, J.; Plank, H.; Fantner, G. E. *ACS Appl. Mater. Interfaces* **2017**, *9*, 24456–24461.
- (52) Fowlkes, J. D.; Rack, P. D. *ACS Nano* **2010**, *4*, 1619–1629.
- (53) Smith, D. A.; Fowlkes, J. D.; Rack, P. D. *Nanotechnology* **2007**, *18*, 265308.
- (54) Fowlkes, J. D.; Winkler, R.; Lewis, B. B.; Stanford, M. G.; Plank, H.; Rack, P. D. *ACS Nano* **2016**, *10*, 6163–6172.
- (55) Mutunga, E.; Winkler, R.; Sattelkow, J.; Rack, P. D.; Plank, H.; Fowlkes, J. D. *ACS Nano* **2019**, *13*, 5198–5213.
- (56) Sushko, G. B.; Solov'yov, I. A.; Solov'yov, A. V. *Eur. Phys. J. D* **2016**, *70*, 217.
- (57) Shen, J.; Muthukumar, K.; Jeschke, H. O.; Valentí, R. *New J. Phys.* **2012**, *14*, 073040.
- (58) Bouscaud, D.; Pesci, R.; Berveiller, S.; Patoor, E. *Ultra-microscopy* **2012**, *115*, 115–119.

- (59) Friedli, V.; Santschi, C.; Michler, J.; Hoffmann, P.; Utke, I. *Appl. Phys. Lett.* **2007**, *90*, 053106.
- (60) Wnuk, J. D.; Rosenberg, S. G.; Gorham, J. M.; van Dorp, W. F.; Hagen, C. W.; Fairbrother, D. H. *Surf. Sci.* **2011**, *605*, 257–266.
- (61) Bishop, J. D. Doctorate Thesis, University of Technology Sydney, Sydney, Australia, 2019.
- (62) Muthukumar, K.; Jeschke, H. O.; Valenti, R.; Begun, E.; Schwenk, J.; Porra, F.; Huth, M. *Beilstein J. Nanotechnol.* **2012**, *3*, 546–555.